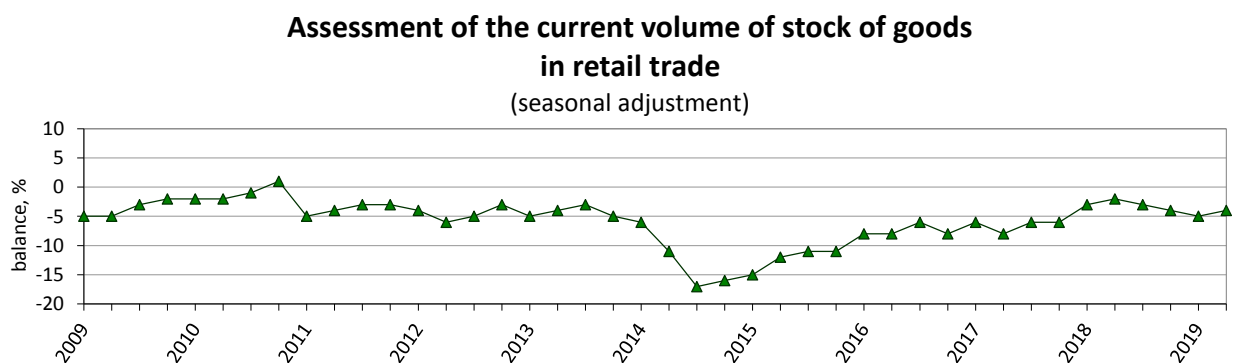
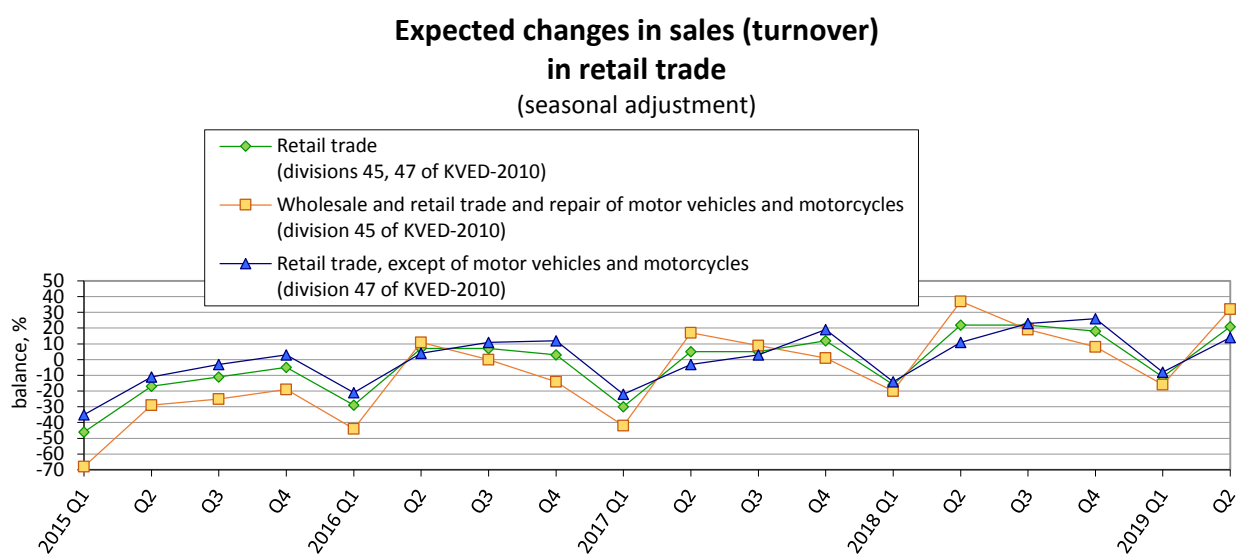
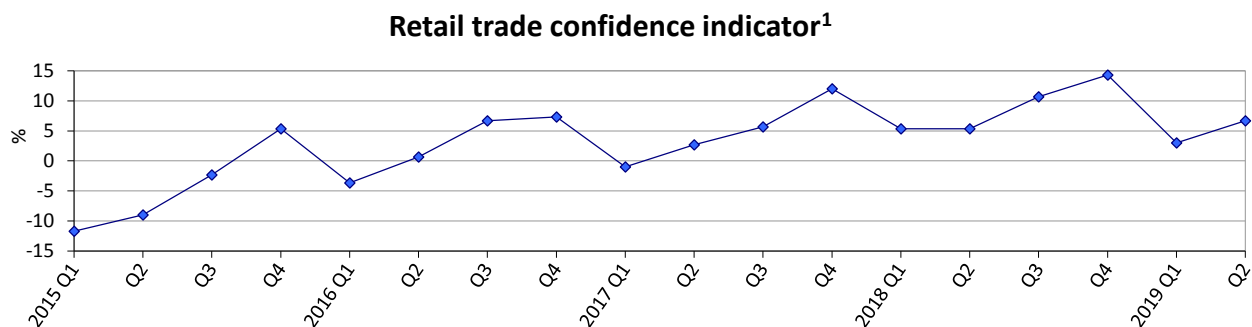


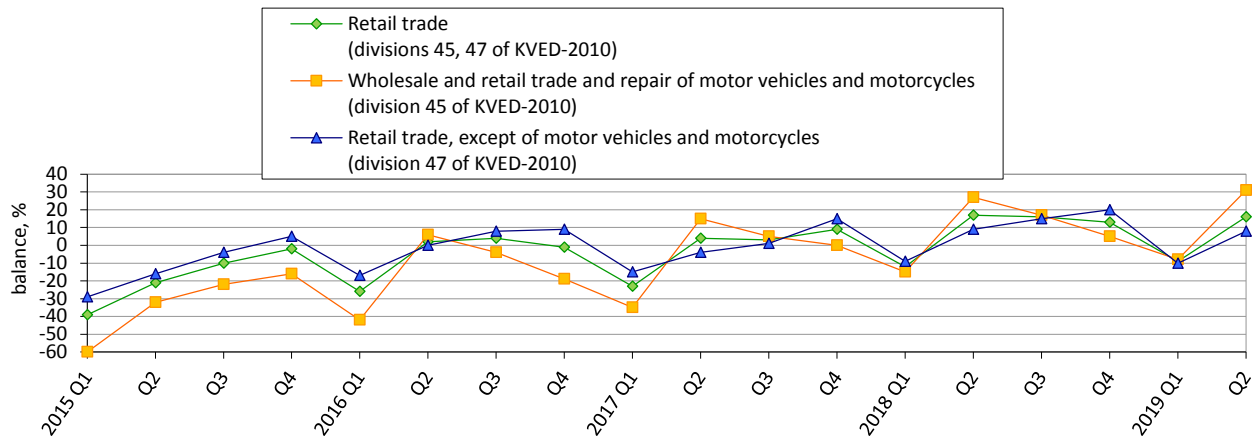
Expectations of retail trade enterprises in II quarter 2019 regarding the development of their business activity



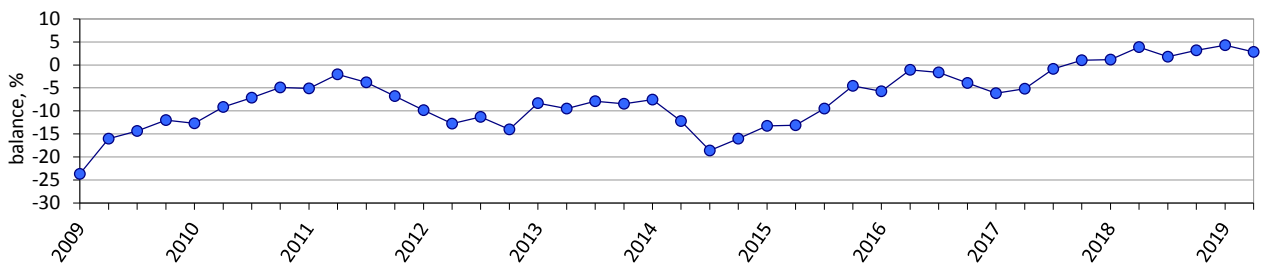
Note. Data for 2014-2019 exclude the temporarily occupied territory of the Autonomous Republic of Crimea, the city of Sevastopol and a part of temporarily occupied territories in the Donetsk and Luhansk regions.

¹ The indicator is calculated by the method of calculation of indicators of business expectations in accordance with the requirements of the Special Data Dissemination Standard Plus of the International Monetary Fund, approved by order of the SSSU of 30 December, 2014 No 411 (in the wording of the order of the SSSU of December 7, 2017 No 319 (with changes)).

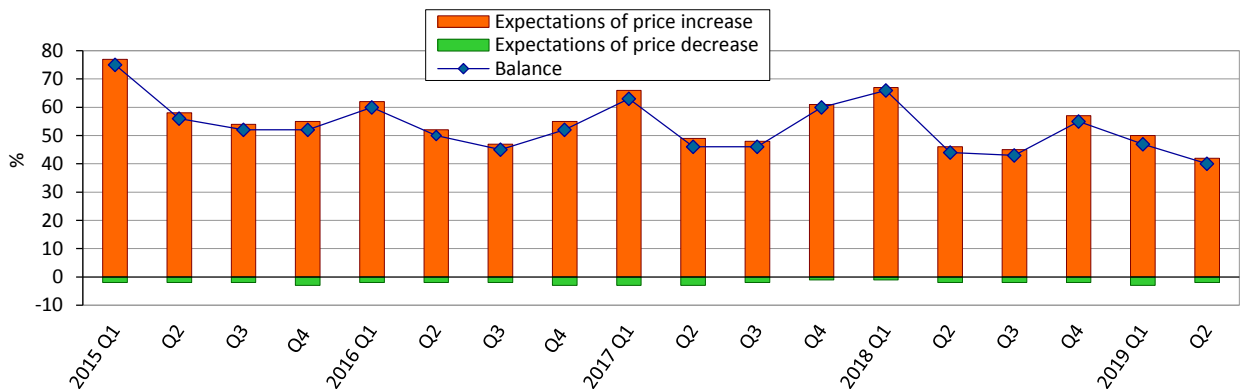
Expected changes in orders placed with suppliers (seasonal adjustment)



Expected changes in employment at retail trade enterprises (seasonal adjustment)



Expected changes in prices of goods in retail trade



**Results of the survey of retail trade enterprises
in April 2019**

(per cent of the total number of surveyed enterprises)

| <i>Retail trade (divisions 45, 47 of KVED-2010)</i> | <i>Results of the survey of 675 enterprises</i> | | | | | | <i>change of balance over I quarter 2019, pp</i> |
|---|--|--|--------------------------------|-----------------------|----------------|--|--|
| | How did change sales (turnover) in January-March 2019 | increased | remain unchanged | decreased | no response | balance | |
| | | 33 | 28 | 38 | 1 | -5 | -20 |
| How do you assess current the volume of stock of goods | too large (above normal) | adequate (normal for the season) | too small (below normal) | no stocks of goods | balance | <i>change of balance over I quarter 2019, pp</i> | |
| | 3 | 85 | 7 | 5 | -4 | 1 | |
| How do you expect to change over April-June 2019: | increase | remain unchanged | decrease | no response | balance | <i>change of balance over I quarter 2019, pp</i> | |
| orders placed with suppliers | 35 | 45 | 19 | 1 | 16 | 25 | |
| sales (turnover) | 42 | 37 | 21 | 0 | 21 | 32 | |
| employment | 12 | 78 | 9 | 1 | 3 | 0 | |
| prices of goods | 42 | 55 | 2 | 1 | 40 | -7 | |

| <i>Wholesale and retail trade and repair of motor vehicles and motorcycles (division 45 of KVED-2010)</i> | <i>Results of the survey of 249 enterprises</i> | | | | | | <i>change of balance over I quarter 2019, pp</i> |
|---|--|--|--------------------------------|-----------------------|----------------|--|--|
| | How did change sales (turnover) in January-March 2019 | increased | remain unchanged | decreased | no response | balance | |
| | | 31 | 28 | 40 | 1 | -9 | -17 |
| How do you assess current the volume of stock of goods | too large (above normal) | adequate (normal for the season) | too small (below normal) | no stocks of goods | balance | <i>change of balance over I quarter 2019, pp</i> | |
| | 3 | 87 | 7 | 3 | -4 | 1 | |
| How do you expect to change over April-June 2019: | increase | remain unchanged | decrease | no response | balance | <i>change of balance over I quarter 2019, pp</i> | |
| orders placed with suppliers | 43 | 45 | 12 | 0 | 31 | 39 | |
| sales (turnover) | 47 | 38 | 15 | 0 | 32 | 48 | |
| employment | 11 | 83 | 6 | 0 | 5 | 2 | |
| prices of goods | 44 | 54 | 2 | 0 | 42 | -5 | |

| Retail trade, except of motor vehicles and motorcycles (division 47 of KVED-2010) | Results of the survey of 426 enterprises | | | | | | change of balance over 1 quarter 2019, pp |
|---|---|--|--------------------------------|-----------------------|----------------|--|--|
| | How did change sales (turnover) in January-March 2019 | increased | remain unchanged | decreased | no response | balance | |
| | 35 | 27 | 38 | 0 | -3 | -23 | |
| How do you assess current the volume of stock of goods | too large (above normal) | adequate (normal for the season) | too small (below normal) | no stocks of goods | balance | change of balance over 1 quarter 2019, pp | |
| | 3 | 85 | 7 | 5 | -4 | | 1 |
| How do you expect to change over April-June 2019: | increase | remain unchanged | decrease | no response | balance | change of balance over 1 quarter 2019, pp | |
| orders placed with suppliers | 31 | 46 | 23 | 0 | 8 | | 18 |
| sales (turnover) | 38 | 37 | 24 | 1 | 14 | 22 | |
| employment | 13 | 76 | 11 | 0 | 2 | -1 | |
| prices of goods | 41 | 56 | 2 | 1 | 39 | -9 | |